

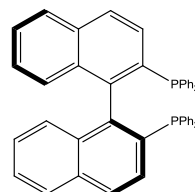
## 手性膦及其不对称加氢铑、钌催化剂

### (S)-(-)-2,2'-双(二苯基膦)-1,1'-联萘

(S)-(-)-2,2'-Bis(diphenylphosphino)-1,1'-binaphthyl

CAS 号: 76189-56-5

用途: 合成手性催化剂的配体。

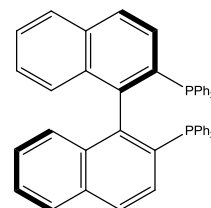


### (R)-(+)-2,2'-双(二苯基膦)-1,1'-联萘

英文名: (R)-(+)-2,2'-Bis(diphenylphosphino)-1,1'-binaphthyl

CAS 号: 76189-55-4

用途: 合成手性催化剂的配体。

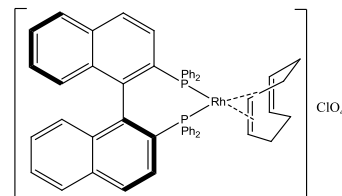


### [(S)-[+]-2,2'-二[二苯基膦基]-1,1'-联萘基](1,5-环辛二烯)铑(I)

[(S)-2,2'-Bis(diphenylphosphino)-1,1'-binaphthyl]-

(1,5-cyclooctadiene) rhodium(I)

用途: 制备左旋薄荷醇的不对称加氢催化剂。

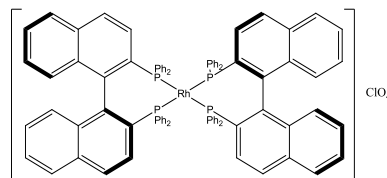


### 二((S)-2,2'-二(二苯基膦基)-1,1'-联萘基)铑(I)

Bis((S)-2,2'-Bis(Diphenylphosphino)-1,1'

-Binaphthyl)Rhodium(I)

用途: 制备左旋薄荷醇的不对称加氢催化剂。

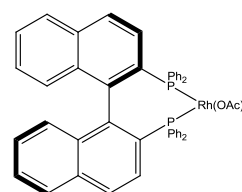


### 二乙酸根[(R)-(+)-2,2'-二(二苯基膦基)-1,1'-联萘基]钌(II)

Diacetato[(R)-(+)-2,2'-bis(diphenylphosphino)-1,1'

-binaphthyl] ruthenium(II) CAS 号: 325146-81-4

用途: 不对称加氢催化剂

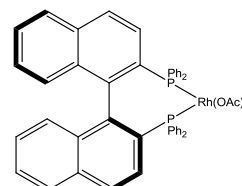


### 二乙酸根[(S)-(-)-2,2'-二(二苯基膦基)-1,1'-联萘基]钌(II)

英文名: Diacetato[(S)-(-)-2,2'-bis(diphenylphosphino)-1,1'

-binaphthyl]ruthenium(II) CAS 号: 261948-85-0

用途: 制备萘普生的不对称加氢催化剂



联系人: 昆明贵金属研究所化学合成研究室 叶青松, 刘伟平

电话: 0871-8329797, 0871-8329899, 13648710787

电子邮箱: liuweiping0917@126.com 或 ipmchemistry @126.com

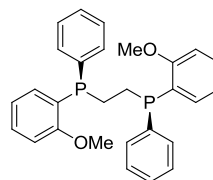
## 手性膦及其铑不对称加氢催化剂

### (1R,2R)-(-)-双[(2-甲氧基苯)苯基膦]乙烷

(1R,2R)-(-)-Bis[(2-methoxyphenyl)phenylphosphino]ethane

CAS 号: 55739-58-7

用途: 合成手性催化剂的配体

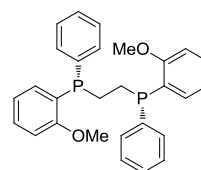


### (1S,2S)-(-)-双[(2-甲氧基苯)苯基膦]乙烷

(1S,2S)-(-)-Bis[(2-methoxyphenyl)phenylphosphino]ethane

CAS 号: 97858-62-3 分子式:  $C_{28}H_{28}O_2P_2$

用途: 合成手性催化剂的配体



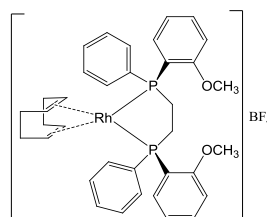
### (1R,2R)-(-)-双[(2-甲氧基苯)苯基膦]乙烷(1,5-环辛二烯)铑(I)四氟硼酸盐

(1R,2R)-(-)-Bis[(2-methoxyphenyl)phenylphosphino]ethane

-(1,5-cyclooctadiene)-rhodium(I) tetrafluoroborate

CAS 号: 56977-92-5 分子式

用途: 制备左旋多巴的不对称加氢均相催化剂



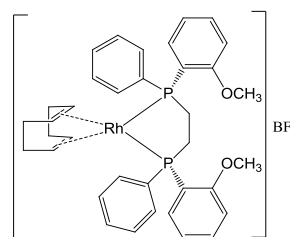
### (1S,2S)-(-)-双[(2-甲氧基苯)苯基膦]乙烷(1,5-环辛二烯)铑(I)四氟硼酸盐

(1S,2S)-(-)-Bis[(2-methoxyphenyl)phenylphosphino]ethane

-(1,5-cyclooctadiene) rhodium(I) tetrafluoroborate

CAS 号: 71423-54-6

用途: 手性均相催化剂



联系人: 昆明贵金属研究所化学合成研究室 叶青松, 刘伟平

电话: 0871-8329797, 0871-8329899, 13648710787

电子邮箱: liuweiping0917@126.com 或 ipmchemistry @126.com